

ELECTRIC FORKLIFT		SPECIFICATION					
1	Manufacturer	BALKANCAR RECORD JSC					
2	Type	ELECTRIC FORKLIFT			ER 35	ER 40	ER 50
3	Load capacity	Q	kg	3500	4000	5000	
4	Load center	C	mm	500			
5	Drive unit	Battery/diesel/LPG			Battery		
6	Type of operation	Pedestrian/Rider seated/Stand-on			Rider seated		
7	Lift	h_3	Lift height	mm	3000 ¹⁾		
8	Overall dimensions	L_2	Length	mm	2900		
9		B	Width	mm	1200	1300	
10		h_6	Height of overhead guard	mm	2220		
11	Drive control	Type	Impulse regulator				

1) For other lift heights refer to MAST table.

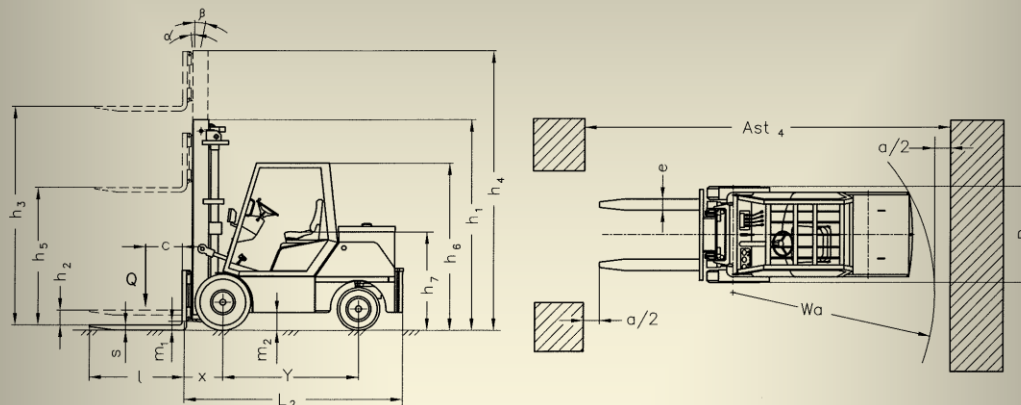
Size h_1 does not include a load backrest. When a backrest is fitted add + 680 mm.

* Electric forklifts in accordance with BDS EN 1726-1.

* Other variants of specifications, characteristics and batteries are possible.

* Dimensions and parameters as shown are for reference only. They have been obtained under laboratory testing conditions. They could vary in accordance with the operation mode and the corresponding variants.

* Balkancar Rekord JSC reserves the right to introduce changes to the specifications and products without notice.



MAST				
TYPE	LIFT HEIGHT h_3	HEIGHT, MAST LOWERED h_1	HEIGHT, MAST EXTENDED h_4	FREE LIFT h_2/h_5

SIMPLEX – 3,5/4,0 t ELECTRIC FORKLIFT
(Two masts, Free lift)

30 S	3000	2100	3585	95
40 S	4000	2590	4545	95

DUPLEX – 3,5/4,0 t ELECTRIC FORKLIFT
(Two masts, Extended free lift)

30 D	3000	2100	3630	1500
------	------	------	------	------

TRIPLEX – 3,5/4,0 t ELECTRIC FORKLIFT
(Three masts, Extended free lift)

42 T	4200	2100	4920	1400
45 T	4500	2240	5240	1500
48 T	4800	2340	5540	1600
52 T	5200	2490	5970	1740
56 T	5600	2590	6320	1850
64 T	6380	2840	7100	2130

SIMPLEX – 5,0 t ELECTRIC FORKLIFT
(Two masts, Free lift)

30 S	3000	2320	3815	60
40 S	4000	2820	4815	60

DUPLEX – 5,0 t ELECTRIC FORKLIFT
(Two masts, Extended free lift)

30 D	3000	2290	3790	1500
------	------	------	------	------

TRIPLEX – 5,0 t ELECTRIC FORKLIFT
(Three masts, Extended free lift)

42 T	4200	2140	4950	1400
45 T	4500	2240	5250	1500
48 T	4800	2340	5550	1600
52 T	5200	2490	5970	1740
56 T	5600	2640	6350	1850
64 T	6400	2890	7150	2130